

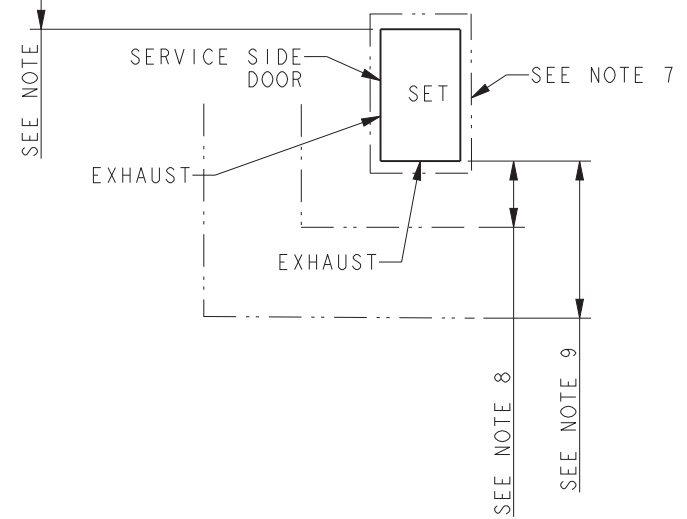
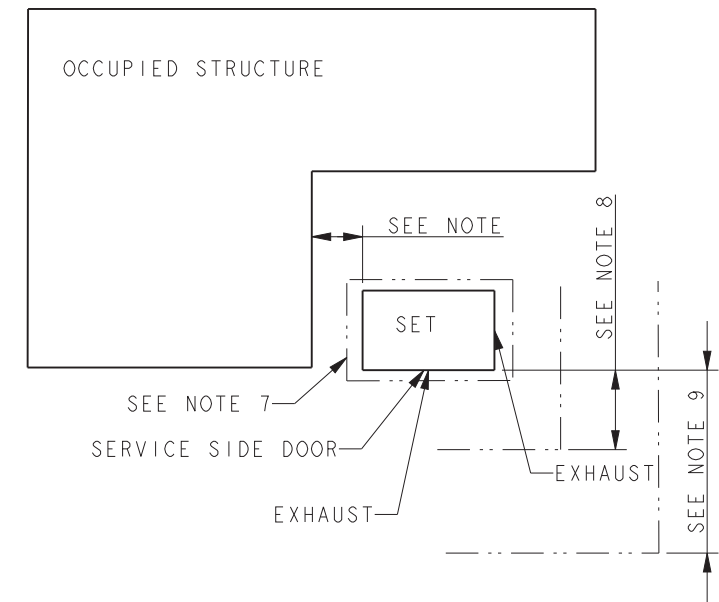
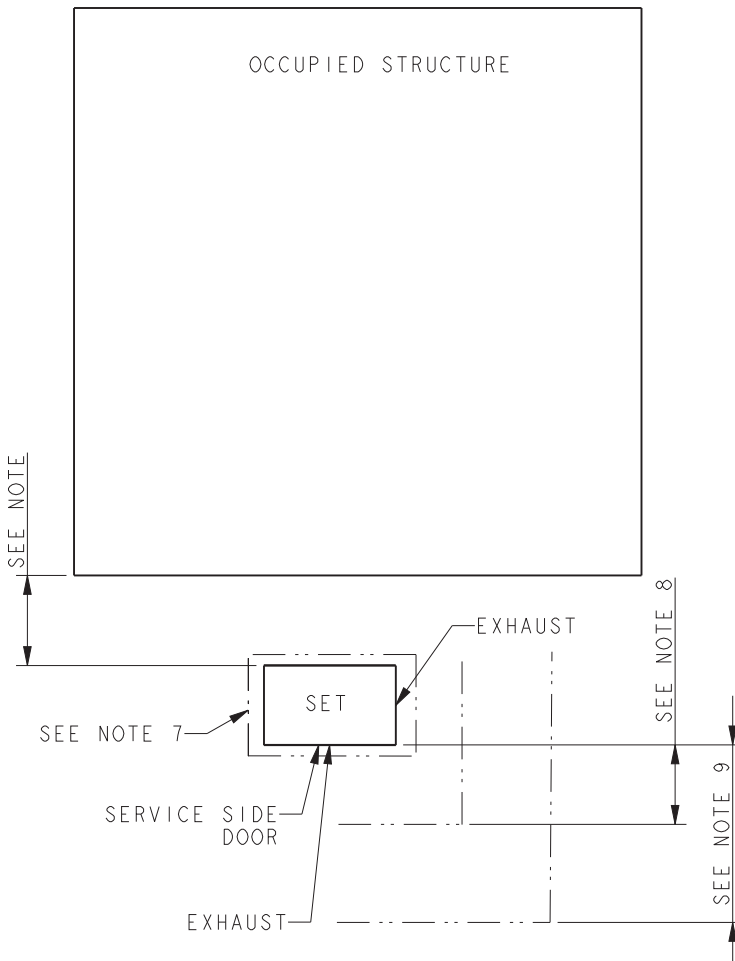
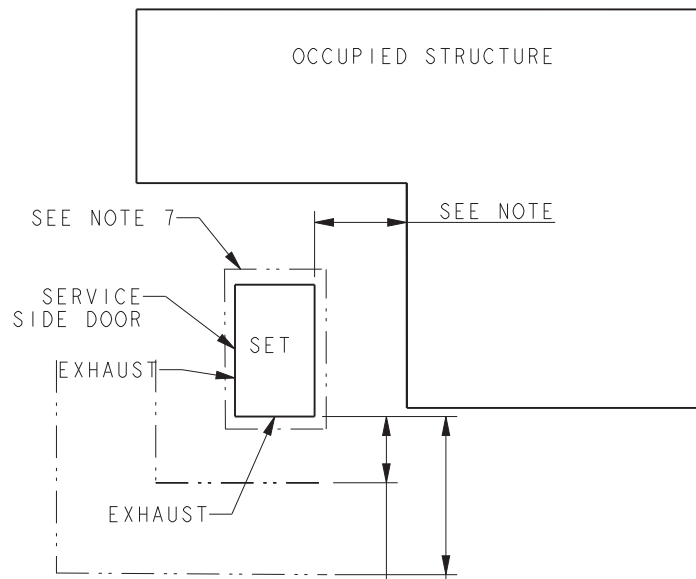
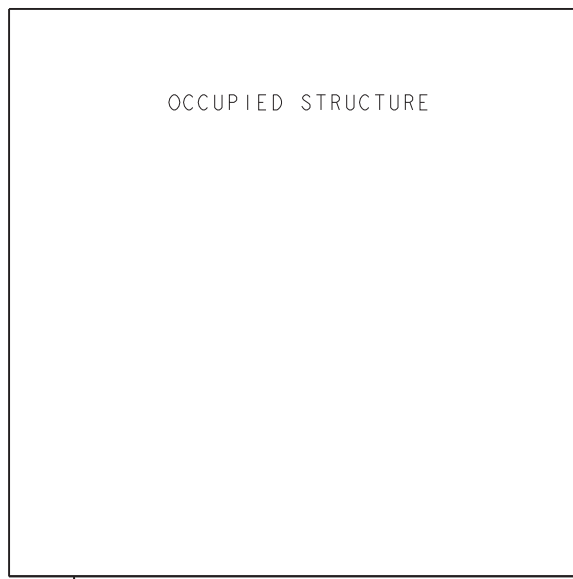
NOTE: DIMENSIONS IN [ ] ARE ENGLISH STANDARD EQUIVALENTS.

REV	DATE	ON COMPOSITE DWGS. SEE PART NO. FOR REVISION LEVEL	BY	UNLESS OTHERWISE SPECIFIED - 1) DIMENSIONS ARE IN MILLIMETERS 2) TOLERANCES ARE:	APPROVALS	DATE
-	10-31-13	NEW DRAWING [CT79277]	DRA	X.XX ± 0.25 X.X ± 1.0 X ± 1.5 ANGLES ± 0° 30'		10-31-13
A	6-3-14	(C-8) 225 WAS 211, 100 WAS 123, (C-7) 421 WAS 392, 100 WAS 216 [CT83066]	DRA	SURFACE FINISH MAX.		10-31-13
B	6-10-15	UPDATED VIEWS TO SHOW CROSS BENT, PITCHED ROOF [CT115573]	BGP	THIRD ANGLE PROJECTION		10-31-13
C	2-25-19	SEE SHEET 2 [CT193814]	HM			10-31-13

**KOHLER CO. METRIC PRO-E**  
POWER SYSTEMS, KOHLER, WI 53044 U.S.A.  
THIS DRAWING IN DESIGN AND DETAIL IS KOHLER CO. PROPERTY AND MUST NOT BE USED EXCEPT IN CONNECTION WITH KOHLER CO. WORK. ALL RIGHTS OF DESIGN OR INVENTION ARE RESERVED.

**DIMENSION PRINT**  
SCALE 0.13 CAD NO. SHEET 1 of 2  
ADV-8641 D

24RCL



SEE NOTE 8  
SEE NOTE 9

SEE NOTE 8  
SEE NOTE 9

SEE NOTE 8  
SEE NOTE 9

INSTALLATION GUIDELINES

- 1) EXHAUST IS AIMED AWAY FROM OR PARALLEL TO THE STRUCTURE.
- 2) EXHAUST IS NOT DIRECTED AT PLAY AREAS, PATIOS OR OTHER AREAS WHERE PEOPLE CONGREGATE.
- 3) THE NEAREST WINDOW, VENT, DOOR OR SIMILAR STRUCTURE OPENING IS AT LEAST 5 FEET FROM THE EXHAUST END OF THE SET.
- 4) SET HAS PROPER OFFSET FROM STRUCTURE.
- 5) WINDOWS & DOORS ON ADJACENT WALLS ARE CLOSED.
- 6) FURNACE AND OTHER SIMILAR INTAKES ARE AT LEAST 10 FEET FROM EXHAUST END OF SET.
- 7) 4" THICK CONCRETE PAD EXTENDING 6" BEYOND GENSET ON ALL SIDES.
- 8) WEED BARRIER & GRAVEL BED TO EXTEND 4 FT. FROM EXHAUST OUTLET. NO PLANTS, SHRUBS OR OTHER COMBUSTIBLES ALLOWED IN GRAVEL AREA.
- 9) SENSITIVE PLANTS, PATIO FURNITURE, ETC. ARE AT LEAST 8 FEET FROM EXHAUST END OF SET.
- 10) REFER TO OWNERS MANUAL FOR OTHER INSTALLATION CONSTRAINTS.

NOTE:

THE RECOMMENDED DISTANCE FROM A STRUCTURE IS DEPENDENT ON STATE AND LOCAL CODES.  
 NFPA 37 (STANDARDS FOR THE INSTALLATION AND USE OF STATIONARY COMBUSTION ENGINES AND GAS TURBINES) STATES THIS DISTANCE SHOULD BE AT LEAST 5 FEET FROM A COMBUSTIBLE MATERIAL.  
 FOR INSTALLATIONS NEAR NON-COMBUSTIBLE MATERIAL, BE SURE TO LEAVE A MINIMUM DISTANCE OF 3 FEET TO EXHAUST SIDES OR 18 INCHES TO INTAKE SIDES TO ENSURE PROPER GENERATOR COOLING. IT IS RECOMMENDED TO LEAVE 24 INCHES OF CLEARANCE ON THE INTAKE SIDE WITH THE SERVICE DOORS.

24RCL/30RCLH

REV	DATE	ON COMPOSITE DWGS. SEE PART NO. FOR REVISION LEVEL	BY	UNLESS OTHERWISE SPECIFIED - 1) DIMENSIONS ARE IN MILLIMETERS 2) TOLERANCES ARE:
-	2-27-14	NEW DRAWING [CT79277]	DRA	X.XX ± 0.25
A	6-3-14	SEE SHEET 1 OF 2 [CT83066]	DRA	X.X ± 1.0
B	6-10-15	SEE SHEET 1 OF 2 [CT115573]	BGP	X ± 1.5
C	2-25-19	(C-1,2,3,4,6,7,8), (D-7) EXHAUST NOTE ADDED; (B-4) NOTE UPDATED [CT193814]	HM	ANGLES ± 0° 30' MAX.
				THIRD ANGLE PROJECTION
		APPROVALS	DATE	
		DRAWN	DATE	
		CHECKED	DATE	
		APPROVED	DATE	

**KOHLER CO.** METRIC PRO-E  
 POWER SYSTEMS, KOHLER, WI 53044 U.S.A.  
 THIS DRAWING IN DESIGN AND DETAIL IS KOHLER CO. PROPERTY AND MUST NOT BE USED EXCEPT IN CONNECTION WITH KOHLER CO. WORK. ALL RIGHTS OF DESIGN OR INVENTION ARE RESERVED.

TITLE: **DIMENSION PRINT**

SCALE: 0.30 CAD NO. SHEET 2 of 2  
 DWG NO. **ADV-8641** D